

# TECHNOLOGY SECTOR CREATING VALUE FOR NEWFOUNDLAND AND LABRADOR

Home-grown Newfoundland and Labrador tech companies are generating wealth and growing the local knowledge-based talent pool.

**165**  
tech companies with  
**3,990**  
employees

**\$1.6bn**  
in annual revenue

## INNOVATION: HAPPENING RIGHT HERE, RIGHT NOW

Local tech companies are putting Newfoundland and Labrador on the map with many internationally recognized innovations, ranging from sonar to data security.



### ICT

Local provider first in Canada to cover an entire city with fiber-to-the-home (FTTH) technology.

### DATA SECURITY

Pioneers of cutting-edge data security technology to protect confidential information from unauthorized use.

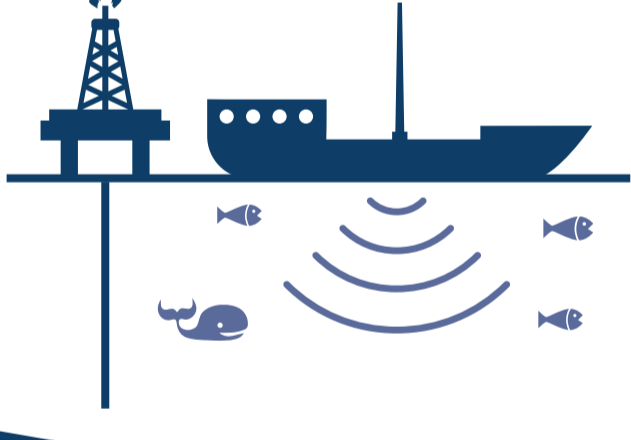


### FRAUD DETECTION

Over 1,000 financial institutions throughout the Americas use software developed in Newfoundland and Labrador to detect financial crime.

### WIRELESS POWER

Market-leading wireless power technology for consumer and military applications from local startup.



### OCEAN TECHNOLOGY

Innovative sonar technology provides ultra-high resolution seabed mapping and imaging for marine, military and oil industries.

## STRENGTHENING REGION

### GENERATING WEALTH



**\$400,000**

Each tech sector employee represents an economic gain of \$400,000 for Newfoundland and Labrador.

### RETAINING SKILLS



High-tech companies attract and retain graduates from Memorial University to strengthen the local labor pool, while driving overall regional growth.

### SUPPORTING INDUSTRY



Boost overall growth in the region, supporting existing industries and creating new ones.

## GROWTH NEEDS INVESTMENT

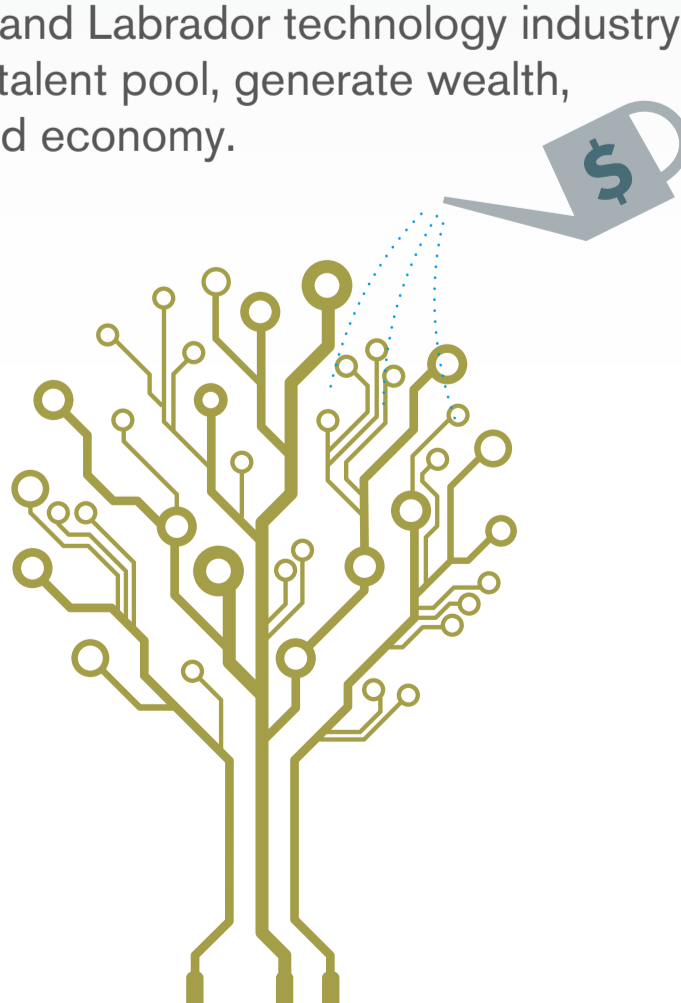
### Goal is to double sector size in next 10 years

Invest in the thriving Newfoundland and Labrador technology industry. Together we can grow the region's talent pool, generate wealth, and accelerate our knowledge-based economy.

Target

**8,000**  
employees

**\$4bn**  
annual revenue in 2025



VOICE OF THE TECHNOLOGY SECTOR FOR OVER 26 YEARS - 165 COMPANIES AND GROWING